

Head of School of Design

Welcome from the Vice-Chancellor

Thank you for expressing interest in the role of Head of School.

The University of Greenwich is a very special place and is rightly proud of its heritage in providing transformative experiences for students from all walks of life.

We are equally proud of our high standards of applied research and enterprise which support economic growth, social impact and sustainability.

As we move into a new era, we are passionate and focused on the future and our collective ambition is to become the best modern university in the UK by 2030. We will achieve this by focusing on student experience and success, investing in our knowledge exchange capability and building upon our existing achievements in applied, impactful research.

We have ambitious plans for our three campuses in London and Kent and these are founded upon our commitment to build successful partnerships, providing sector leading facilities and attracting talent on a global scale. We are particularly proud of our diverse student and staff body and our explicit commitment to equality, equity and inclusion.

To support us to deliver our refreshed University Strategy, we are putting in place a new senior structure in all our Faculties which will enable us to achieve our ambitions and ensure that staff in these senior roles are developed and supported as leaders.

To support us to deliver our refreshed University Strategy, we are putting in place a new senior structure in all our Faculties which will enable us to achieve our ambitions and ensure that staff in these senior roles are developed and supported as leaders.

Following a reorganisation, we are seeking outstanding people to join us in the following Head of School Roles:

Faculty of Education, Health & Human Sciences

- Head of School of Education

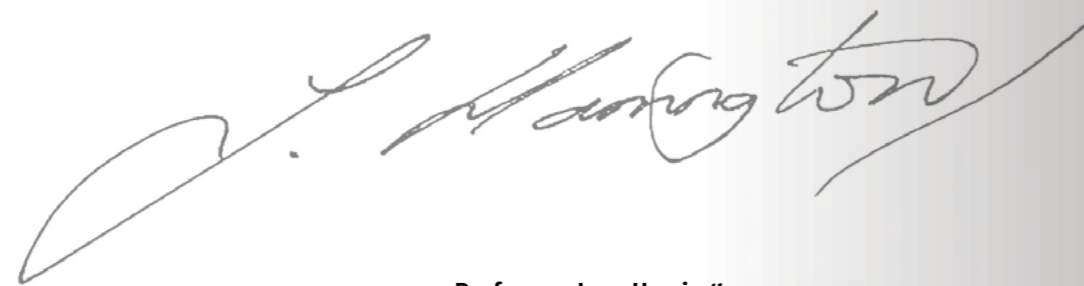
Faculty of Engineering & Science

- Head of School of Science

Faculty of Liberal Arts and Sciences

- Head of the School of Design
- Head of the School of Humanities & Social Sciences
- Head of the School of Law & Criminology
- Head of the School of Stage & Screen

You will provide strategic and operational leadership for the School that covers a wide range of disciplines. If you have drive, commitment, professional credibility and share our passion for higher education and its power to create opportunities and change lives for the better, I encourage you to apply for the role.



Professor Jane Harrington
Vice-Chancellor



Great things about the University of Greenwich

- We have more than 125 years of experience providing quality education.
- We have won five Queen's Anniversary Prizes for Higher and Further Education, including a prize in 2019 for our Natural Resources Institute's ground-breaking work to find smart solutions for pest control in the developing world.
- Our Greenwich Campus is based on a UNESCO World Heritage Site, and we are custodian of 16 listed buildings of special architectural or historic interest.
- 90% of our students are in employment or further study six months after graduation.
- In the 2019 National Student Survey, more than 82% of our final-year undergraduate students said they were satisfied, overall, with their course, one of the highest scores among universities in London.
- We have won nine Times Higher Education awards, including Most Innovative Teacher and Outstanding Contribution to Innovation and Technology.
- Nobel Prize winner Professor Charles Kao, pioneer of fibre optics, was educated here.
- We are proud of the diversity of our international student body and our engagement in transnational education. The university has around 15,000 students in ca.31 partnerships across 19 countries. Our UK-based students come from more than 146 countries, and in 2018–19 22% were domiciled from outside the UK.
- In 2018, we established the University of Greenwich International College (UGIC) in partnership with Oxford International. Located on our Greenwich Campus, UGIC is an embedded college which offers an exciting range of undergraduate and postgraduate courses for international students leading to progression to the university.
- We've a 1st class environment rating from the People & Planet University League for our environmental and ethical performance.
- The university is well positioned for attracting students. QS Best Student Cities ranked London as the world's most student-friendly city in its 2018 edition.
- Improvements in our student experience include Dreadnought Building, a £25 million conversion which brings together all student-facing services on Greenwich Campus in one place for the first time; the Medway Student Hub, a new on-campus entertainment and social space; our award-winning Stockwell Street Building, which houses the main library; and the Cooper Powerhouse, a research, enterprise and teaching hub supporting student entrepreneurship.
- Our Teaching Excellence Framework Silver rating indicates that we provide our students with engaging, personalised teaching that encourages their commitment to learning and study.
- Our academic staff includes recipients of the prestigious National Teaching Fellowship, which recognises and rewards individual excellence in teaching in higher education.
- Ofsted has given us its 'Outstanding' rating for the quality of our training in primary education.
- Two of the recent winners of the British Journal of Midwifery's Student Midwife of the Year award have come from the University of Greenwich.
- The university has two Guardian University Awards for Research Impact. Guardian University Awards showcase world-class teaching, research, leadership and engagement within the higher education sector.
- Life-saving research carried out by the university includes projects to reduce loss of life during fire evacuations and to develop a trap for a malaria-carrying species of mosquito.
- Our alumni excel in every walk of life. They range from lawyer Shabina Begum, a campaigner for the empowerment and protection of women, to composer Guy Penwill, a member of a double Oscar-winning special effects team, and Abiy Ahmed, Prime Minister of Ethiopia and winner of the 2019 Nobel Peace Prize. Our annual Greenwich Portraits exhibition recognises some of our most outstanding alumni..



About the university

The university takes its name from the Royal Borough of Greenwich in London. Greenwich has a long and rich history which forms the backdrop and inspiration for today's university. Many of the buildings on Greenwich Campus were designed at the end of the 17th century by Sir Christopher Wren, one of Britain's greatest architects, and the work was overseen by Nicholas Hawksmoor and Sir John Vanbrugh, both towering figures in their field.

The £76 million Stockwell Street Building continues this tradition of innovative architecture within the Maritime Greenwich World Heritage Site.

Altogether, the university is custodian of 16 listed buildings, including the grand former Royal Naval Barracks at Chatham Maritime, now home to the Medway Campus.

More information on [Governance and University Leadership](#) is available on our webpages.

Our vision, our values and our strategy

Our vision for 2030 is to be the best modern university in the UK.

Our university is a community of people from many walks of life. We take pride in the diversity of our subject expertise, the lived experience of our staff, students and alumni, and the diversity of campus experiences we offer. This diversity is our strength and enables us to say we are a university that empowers others to make a difference locally, regionally, nationally and internationally, with equal intensity.

What makes the university distinctive is that we proactively support our students and staff to achieve their ambitions because of rather than despite, their backgrounds.

The University of Greenwich Strategy is driven by the vision of Education without Boundaries, underpinned by the values of inclusivity, collaboration and impact and principles of creating opportunities, building partnerships and delivering impact.

The University has four Strategic Priorities:

1. Student Success
2. Inclusivity and Culture
3. Research and Knowledge Exchange
4. Connected Sustainable Campuses

Education Without Boundaries means:

- Widening access to higher education for individuals who may otherwise not aspire to experience and benefit from it.
- Fighting for improved social mobility and equality, diversity and inclusions in everything that we do.
- Empowering our students to use their lived experience to stand out in their chosen vocation in the workplaces of tomorrow.
- Empowering our staff to innovate in a way that makes a difference academically, commercially and socially.
- Providing physical and digital campus services that foster a sense of community to build networks, peers, friends and connections that set our students up for life.
- Breaking down boundaries that exist within and between academic disciplines, locations and borders.
- Ensuring an equitable focus on local (civic), regional, national and global agendas.

4th in the UK

for delivering degrees around the world

The Higher Education Statistics Agency (HESA)

Over half

of our new students come from some of the most deprived areas in the country

Office for Students access and participation data, 2021

Study at a university with internationally recognised green credentials

1st class rating for our environmental and ethical performance

(2019 People & Planet University League)



1st Class rating

by the People & Planet University League for our environmental and ethical performance

57% of our new students come from a Black, Asian and minority ethnic background

BAME

Office for Students access and participation data, 2021

11th worldwide in the category of reducing inequalities

(The 2021 Times Higher Education Global Impact Rankings)

#1 modern London uni

and top overall in Kent for graduate prospects

THE TIMES THE SUNDAY TIMES

GOOD UNIVERSITY GUIDE 2022

Our faculties

Faculty of Liberal Arts & Sciences

The Faculty of Liberal Arts & Sciences covers a broad range of disciplines, including architecture, landscape architecture and the built environment; computer science, computing, mathematics and games and digital media; humanities and social sciences; law and criminology; and media and creative arts.

The historic Greenwich Campus and its proximity to London's galleries, museums and theatres are a major draw for our students, including those studying literature, history and creative writing.

Among our impressive facilities are industry-ready computer labs and video and film-making studios. The 100-seat Bathway Theatre in south-east London provides a venue for our drama students to put their learning into practice.

Many of the faculty's courses are accredited by the relevant professional bodies, ensuring that students graduate with the skills and knowledge required by their chosen professions.

Greenwich Business School

The Greenwich Business School has an international focus that fits perfectly with today's global economy. It offers dynamic courses that combine academic learning with hands-on experience, preparing students for successful business careers and leadership roles. A major benefit of studying at the Greenwich Business School is its location. Greenwich Campus is within easy reach of Canary Wharf, one of the world's key financial districts and a major provider of business internships, work experience and placements.

Students choose from a wide variety of courses, including MBAs and research degrees. Subjects include accountancy and finance, business studies, economics, financial services, international marketing and personnel management. The school works with employers to develop courses that are accredited by the relevant professional bodies.

Faculty of Education, Health & Human Sciences

For more than 100 years, the Faculty of Education, Health & Human Sciences has provided high-quality education in a wide range of careers.

Many of our students go on to become teachers, nurses, midwives, paramedics, social workers, psychologists and public health professionals, or find other rewarding careers that also bring real benefits to society.

We focus on giving students the skills they need to start or grow their careers and meet the requirements of the relevant professional bodies.

Our teaching and research facilities are excellent, from clinical skill laboratories that replicate NHS wards to innovative facilities for learning to teach PE, design technology, music and science. Our tutors are active in research and leading authorities in their fields.

Faculty of Engineering & Science

From its base on the university's Medway Campus, the Faculty of Engineering & Science provides students with research-informed teaching supported by industry-standard labs and IT facilities.

The faculty has a strong background in research, with its academic disciplines of engineering, science and pharmacy delivering life-saving innovations in the UK and around the globe.

The faculty includes the Natural Resources Institute, a multidisciplinary organisation that provides award-winning research in areas such as food, agriculture and the environment.

Students study a wide range of subjects, from cybernetics and electrical and electronic engineering to pharmaceutical, chemical and environmental sciences. Leading professional bodies accredit over half of the faculty's courses.



Head of School of Design Role

Heads of School work to a consistent job description/person specification and will need to demonstrate our leadership behaviours. This role descriptor has been developed to reflect the local differences across disciplines/faculties.

In addition to the generic job descriptors, the Head of the School of Design will be an experienced leader who can guide the School through the challenges of nurturing and growing a contemporary London-based design school with an ambitious plan for change and portfolio development.

The Head of the School of Design will be expected to:

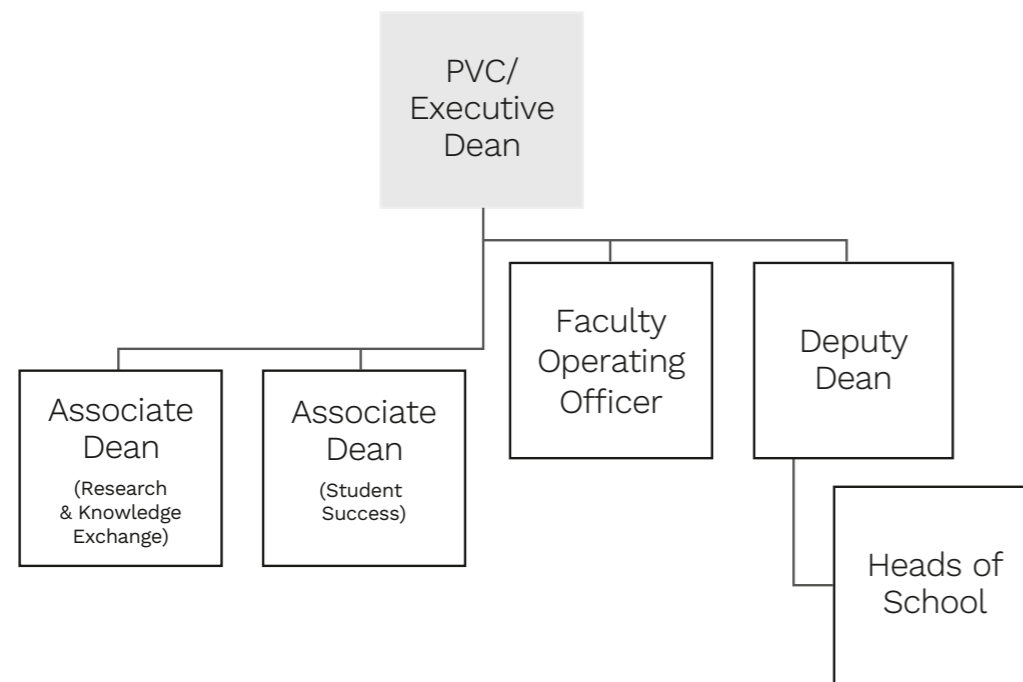
- Develop a new portfolio for the school that facilitates industry partnership at all levels and further embeds new PSRBs where appropriate
- Build on existing international links and develop new partners particularly in North America
- Contribute to the School's successful research culture and inspire others to attain excellence in research and enterprise activity
- Address the School's attainment gaps with a clear plan for action
- Foster an environment for staff and students that is both facilitative and inclusive

All senior managers will demonstrate the following leadership behaviours:

- **Leads Authentically and Inclusively**
Demonstrates and articulates high expectations of self and others to improve and sustain performance. Seeks to give feedback that is credible and challenging, as well as supportive and encouraging to improve performance where needed. Inspires and actively empowers individuals and teams to deliver on tasks, to maximise their performance and potential. Is aware of their biases and preferences and seeks out and considers different views and perspectives to inform decision-making.
- **Leads Change**
Shapes and articulates the overall vision, setting a clear direction that engages and shapes and articulates the overall vision, setting a clear direction that engages and connects people in the delivery of change plans. Learns from experience and has confidence to try new ideas, drawing from internal and external sources. Willing to take on new challenges and maximises future opportunities and possibilities.
- **Builds Trust**
Builds a shared purpose and trusts team members to achieve objectives. Uses clear unambiguous language, actively listens, encourages feedback

and can be trusted to deliver. Influences with integrity, actively builds working relationships and challenges inappropriate behaviour. Values equality and diversity and personally demonstrates an inclusive approach.

- **Thinks and Acts Strategically**
Understands the context and environment in which the University operates and how its performance compares to its competitors. Seeks and assimilates different types of information to make informed decisions that are consistent, clearly communicated and followed through. Demonstrates sound judgement based a clear set of values. Develops effective networks and partnerships both internally and externally. Actively refers to the University's strategy and contributes to the student experience.
- **Personally Effective**
Has the ability and confidence to interact effectively with people in a range of contexts. Demonstrates emotional self-awareness and reflects on the potential impact of their behaviour on others. Exhibits an engaging, energetic and enthusiastic leadership style, role modelling expected behaviours and encouraging feedback on own performance.



How to apply

This is an exciting time to join us. If you share our commitment to Education Without Boundaries, we want to hear from you. Please review the full job description, candidate specification, role descriptors and details of how to apply, by clicking on the following link: <https://jobs.gre.ac.uk/2867>

Should you wish to have an informal conversation regarding this post, please contact the HR Recruitment Team at shrrrec@greenwich.ac.uk in the first instance.

- Applications are invited by close of business on 24 October 2021

We are under-represented by BAME colleagues at this level and would encourage and welcome applications from BAME candidates.

5 Queen's Anniversary Prizes for Higher & Further Education

University of Greenwich
Old Royal Naval College
Park Row, London SE10 9LS
greenwich.ac.uk



UG16253 Deputy Dean

